

**KELSEY COURT HOMEOWNERS ASSOCIATION**  
**APPROVED OR STANDARD REPAIRS AND ITEMS**

*PAINT*

McCormick “Kelsey Court Beige” (State House Exterior Acrylic, Semi Gloss)

Nearest McCormick location: Bailey’s Crossroads

4676 King St

Alexandria, VA 22302

Phone: 703-379-0100

Email: [baileys@mccormickpaints.com](mailto:baileys@mccormickpaints.com)

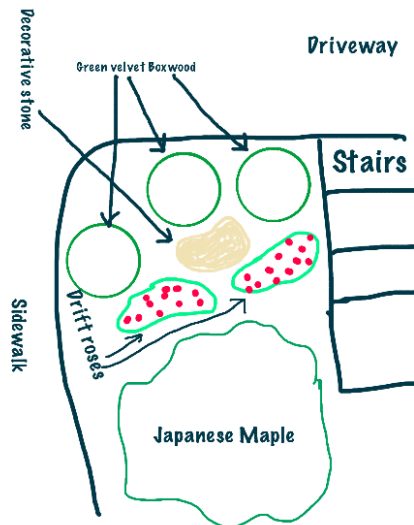
*LANDSCAPING*

General Guidelines: Strive for a continuous, year-round look and have individuality among units. Avoid annual flowering plants and please be mindful of invasive or fast-growing plants, trees, or shrubs.

Recommended and Previously Approved Plants: Crepe myrtle, holly, bayberry, hydrangea, hosta, fir, skip laurel, grasses, and azalea

If you are considering a landscaping project, please email the Board with a general depiction of your landscaping proposal.

Example depiction:



## *EXTERIOR ITEMS*

Outdoor Light Fixture: Design House Jackson Solid Brass Outdoor Wall-Mount Uplight (Model# 501486), Cost: \$40.45

<http://www.homedepot.com/p/Design-House-Jackson-Solid-Brass-Outdoor-Wall-Mount-Uplight-501486/202500827>



Outdoor Light Bulbs: Philips 60W Equivalent Soft White F15 Post Light Dimmable LED Light Bulb (Model# 458620), Cost: \$6.97

<http://www.homedepot.com/p/Philips-60W-Equivalent-Soft-White-F15-Post-Light-Dimmable-LED-Light-Bulb-458620/206514303>



Storm Door: ProVia Model #396 One-Lite, Café Cream color, with Bright Brass hardware, Cost: \$460

<http://www.proviaproducts.com/assets/img/pdf/storm-door-catalog/files/assets/common/downloads/publication.pdf>

[http://www.thehouseofwindows.com/Storm\\_Door\\_Aluminum\\_p/delu.htm](http://www.thehouseofwindows.com/Storm_Door_Aluminum_p/delu.htm)

